

Linear LCD Graphic Panel

This unique media stand allows you to merge your graphics with an audio visual message. The screen can be moved vertically and horizontally. An attention grabber for any exhibitions



LCD monitor not supplied



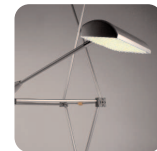
features & benefits

- Portable and easy to assemble
- Anodised aluminium construction
- 75mm round modular post system as standard
- Available in 3 different sizes: 2000mm(h) x 1000mm(w), 2000mm(w), 3000mm(w)
- Steel oval bases supplied as standard

Recommended accessories:



Linear standard shelf - **LN130**



LED Flood light **PS1050**
Requires **US-LINEAR**



Acrylic stacks **LN602-LCA**

hardware specifications

Hardware dimensions (mm):

2000 (h) x 1250 (w) x 400(d) approx
2000 (h) x 2250 (w) x 400(d) approx
2000 (h) x 3250 (w) x 400(d) approx

LCD hook over bracket max weight:
4kg

graphic size (mm):

Recommended graphic size (mm):

LK025-C - requires 1 drops at 2000mm (h) x 1000mm (w)
LK025-D - requires 2 drops at 2000mm (h) x 1000mm (w)
LK025-E - requires 3 drops at 2000mm (h) x 1000mm (w)

Important: create a cut out in the graphic of 175mm(h) x 125mm(w) to allow for the LCD bracket

Recommended graphic substrates:

Mag tape fixing:
300micron polyester

Assembly Instructions

Linear LCD graphic panel



Male post x 2
(weight 1kg approx)



Steel oval base & M10 bolt x 2
(weight 4kg approx)



PVC clear washer x 1



Allen Key



LCD hook over
bracket x1



Female post x 2
(weight 1kg approx)

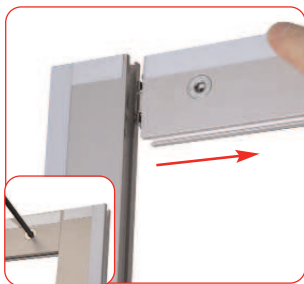


1000mm beam x 4
(weight 1kg approx)

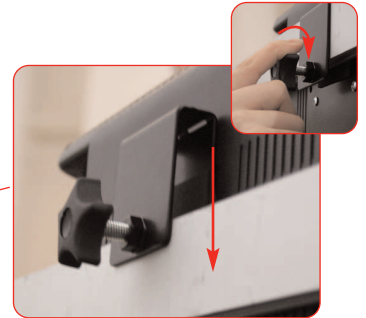


Linear PVC wing extrusion x 2
(weight 1kg approx)

Please note that the above kit is based on a LK025-C - 2000mm(h) x 1000mm(w) x 400mm(d)



Attach horizontal beams to the vertical frame sides. Tighten locks using a 5mm allen key. If using rigid infill graphics, slide these in to position before tightening beams.

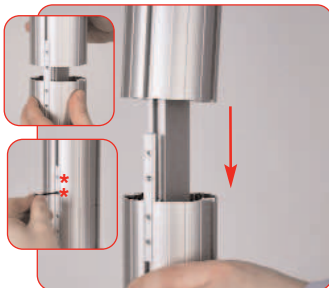


To attach the LCD bracket, hook the bracket over the linear beam and the tighten thumb screw until fully secure



To attach the PVC wing simply cut the PVC wing to the required length, click the PVC wing into the channel on the linear until fully secure

Important: Once frame is complete apply steel tape around the frame and PVC extrusion



Align and slide female post over male post, tighten both grub screws using a 2mm allen key.



Attach base to male post using M10 bolt and allen key. Ensure clear washer is between base & post. Repeat step for 2nd post.